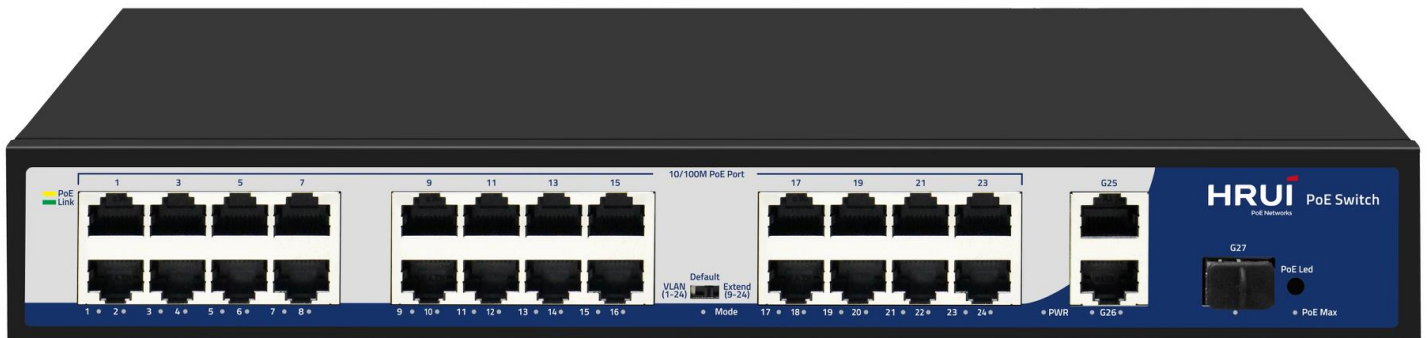


24-port 10/100Mbps + 3-port Gigabit Intelligent Switches with 24-port PoE+

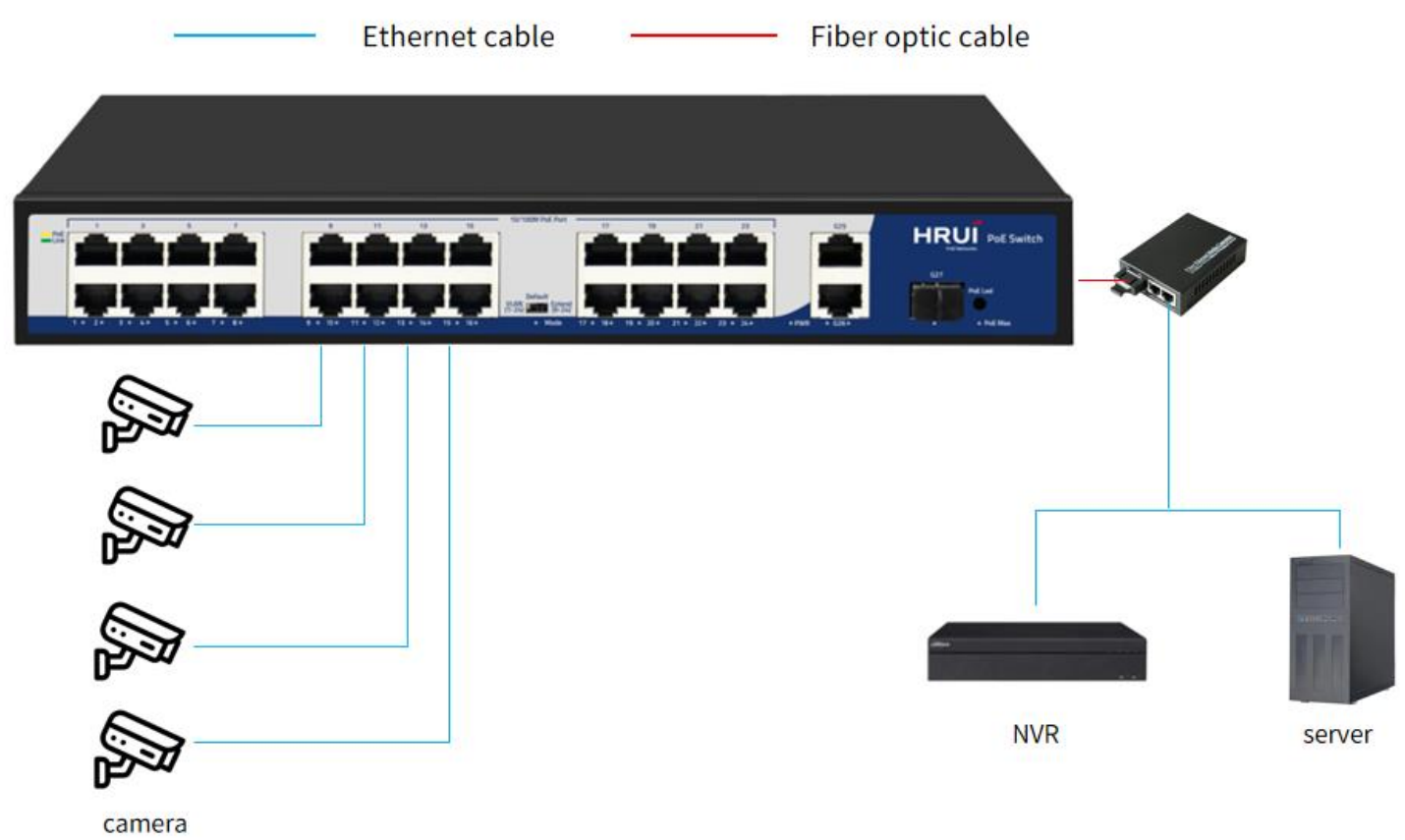


Highlights

- 24 *100Mbps PoE ports+2 *Gigabit RJ45 ports+1 *Gigabit SFP port;
- Compliant with IEEE802.3, IEEE802.3u, IEEE802.3ab, IEEE802.3x, and IEEE802.3z standards;
- RJ45 port supports 10/100Mbps adaptation;
- When the PoE port is in Extend mode, ports 9-24 force 10Mbps to automatically activate the PoE watchdog mode;
- PoE priority is enabled by default,with priority order from 1 to 24 ports
- Flow control method: IEEE 802.3x standard is used for full duplex, and Back pressure standard is used for half duplex;
- The panel indicator lights will monitor the working status and assist in fault analysis:

Specifications

Product Application



Specifications

Hardware Features & Performance		
Model		HR900-AF-2421GS-300
General	Interface	24 *100Mbps PoE ports 2 *Gigabit RJ45 ports 1 *Gigabit SFP port
	Port Standard	IEEE802.3 (Ethernet) IEEE802.3u (Fast Ethernet) IEEE802.3ab (Gigabit Ethernet) IEEE802.3x (Flow Control) IEEE 802.3z (Gigabit Ethernet Fiber Standard)
Performance	Switching Capacity	10.8Gbps
	Packet Forwarding Rate	8.03Mpps
	Packet Buffer	768Kbit
	MAC Address Table	2K
	Transmission Method	Store and Forward
PoE	PoE Standard	IEEE802.3af (15.4W) IEEE802.3at (30W)
	POE Port Output Voltage	DC 44-57V
	PoE Ports	Port 1-24 PoE power output <30W
	PoE Power Budget	290W
Physical	Power Supply	AC 100-240V 50/60Hz DC 52V 5.76A
	Mainboard Power Consumption	6.6W
	Structure Information	Product Dimensions :320*207*45mm Packaging Dimensions : 370*290*85mm Product Net Weight:1.79KG Product Gross Weight:2.32KG
	Packing Information	Carton Dimensions :445*310*390mm Packing Quantity: 5PCS Packing Weight: 12.6KG
	Packing List	switch 1pcs, power cord 1pcs, instruction manual 1pcs, certificate of qualification 1pcs
	Fan Quantity	0
	Installation	desktop
Environment	Surge Protection	Surge protection: common mode 4KV, differential mode 2KV Electrostatic ESD: Air 8KV, Contact 6KV (Class B)
	Operating Temperature	0~40℃
	Storage Temperature	-40 ℃ to 70 ℃
	Operation Humidity	10%~90%, non condensing
	Storage Humidity	5%~95%, non condensing

Specifications

Hardware Features & Performance		
Buttons& Indicator Lights	PWR	On: Powered on Off: Powered off
	Mode	On : VLAN Flashing : Extend Off : Default
	1-27 Green Light	On: Link normal Off: Link blocked Flashing: Data transmitting
	1-24 Yellow Light (PoE)	On: PoE power on Off: PoE powered off
	PoE Max	On: indicates PoE power usage is less than 90% Flashing: indicates PoE power usage of $90\% \leq P \leq 95\%$ Off: indicates that PoE power is used at $95\% < P < 100\%$
	PoE LED Buttons	Dual color light selection: default green (link data), switch yellow light (PoE)
	VLAN/Default/Extend Modes Buttons	VLAN: Isolation mode, 1-24 ports isolated from each other, communicating with 25-27 ports, port PoE watchdog mode enabled Default: Normal mode, all interfaces can communicate with each other, transmission distance is within 100 meters, transmission rate is 10/100Mbps adaptive, port PoE watchdog mode is turned off Extend: Link extension mode, 9-24 ports PoE power supply and data transmission distance can be extended to 250 meters, transmission speed is 10Mbps, port PoE watchdog mode is enabled

Specifications

Product Pictures



Product Structure Diagram

